

Get advice from ChatHealth Health Visiting free text messaging service. It's confidential and available Mon-Fri 9am-5pm.
07480 635164

Supporting your Child's Development in the Early Years

If you have any concerns around your child's health or development, you can contact the Family Centre Service (Health Visiting and Family Support) on

0300 123 7572

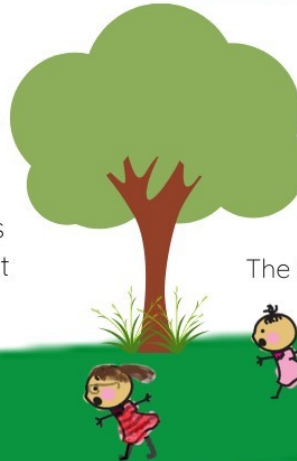
3 - 4 YEARS

The term after your child's 3rd birthday you are entitled to 15 hours a week free early education. Your childcare provider will support you with any concerns around your child's development.



2 - 2 ½ YEARS

By 2 ½ years, you will be invited to attend a Health and Development review with the Health Visiting Team. Remember there is lots of support available at your local Family Centre.



0-11 MONTHS

Your baby's Health and Development is important. and the Health Visiting Team supports the health, development and wellbeing of your baby. Scan the QR code for more information and to book to weigh your baby.

The Family Support Service will also be in touch to welcome you.



1 YEAR

By 10 months you will be invited to attend a Health and Development review with the Health Visiting Team.

FAMILY CENTRE SERVICE

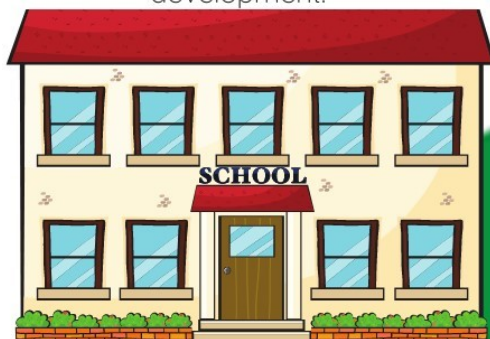
- Can offer support with:
- introducing Solid Food
 - Toileting
 - Sleep, routines and boundaries.

Scan the QR code below to find out more and to book.



4 - 5 YEARS

Your child can start school the term after their 4th birthday. Your school will support you with any concerns around your child's development.



Scan the QR code for more information on services available and to book sessions at a Family Centre.

